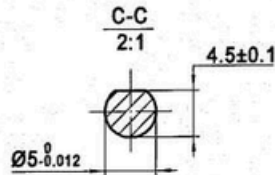
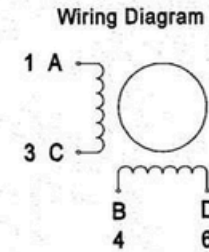
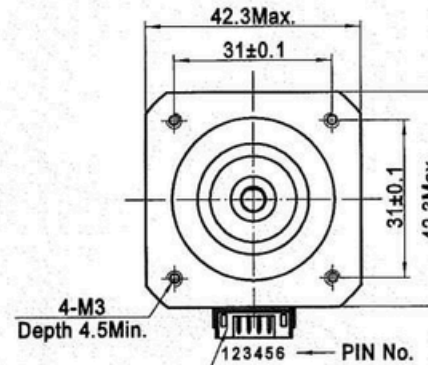
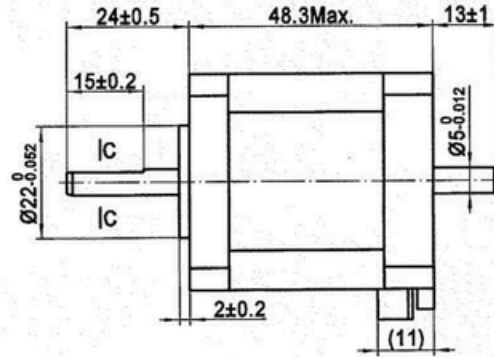
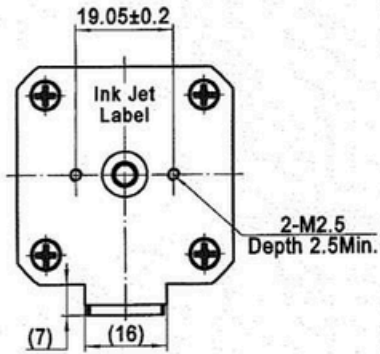


4611110026893



Exciting Sequence vs. Direction of Rotation

STEP	A	B	C	D	Direction
1	+	+	-	-	↑ CCW ↓ CW
2	-	+	+	-	
3	-	-	+	+	
4	+	-	-	+	

Clockwise view from mounting side

Specifications

1. Number of Phase	2
2. Step Angle	1.8°
3. Rated Voltage	2.6V DC
4. Rated Current	2.0Amp
5. Holding Torque	0.63Nm Typ.(Two phase on/rated current)
6. Phase Resistance	1.3ohm±10%(20°C)
7. Phase Inductance	2.9mH±20%(1kHz 1V rms)
8. Rotor Inertia	82gcm ²
9. Motor Weight	0.36kg
10. Insulation Class	B(130°C)

Label Detail

MOONS' STEPPING MOTOR
TYPE MS17HD6P4200-M
XXXXXXXX YY/MM/DD

Work Order

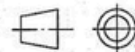
Date Format

Unit: mm

FIRST ANGLE METHOD

Tolerances for linear and angular dimensions without individual tolerance indications
GB/T 1804-m eqv ISO 2768-1 : m

Geometrical tolerance for features without individual tolerance indications
GB/T 1184-K eqv ISO 2768-2 : K



Approve

Standardize

Process Review

Check

Design

PIVEXIN
TECHNOLOGY

Original revision 2017.07.06

REVISION RECORD REVISION RECORD DATE UNLESS OTHERWISE SPECIFIED NAMES SIGNATURE DATE Type: MS17HD6P4200-M Rev.A SCALE 1:1 Sheet 1 of 1